

**THE BOROUGH OF STOCKTON-ON-TEES
WHITTON ROAD AREA, FAIRFIELD, STOCKTON
TRAFFIC REGULATION ORDER 2023**

The Council of the Borough of Stockton-on-Tees (hereinafter referred to as "the Council") in exercise of their powers under Section 84 of the Road Traffic Regulation Act 1984 ("the Act") and of all other enabling powers, and after consultation with the Chief Officer of Police in accordance with Part III of Schedule 9 to the Act hereby make the following Order:-

1. This Order shall come into operation on the 16th October 2023 and may be cited as The Borough of Stockton-on-Tees, Whitton Road Area, Fairfield, Stockton, Traffic Regulation Order 2023.
2. No vehicle shall proceed along the lengths of road specified in Schedule 1 at a speed exceeding 20 mph.
3. Nothing in Article 2 of this order shall apply to:-
 - i) an emergency services vehicle responding to an emergency or;
 - ii) a vehicle used for naval, military or air force purposes if it is being driven by a person for the time being subject to the orders of a member of the armed forces of the Crown on an occasion when:-
 - (a) the person driving the vehicle is a member of the Special Forces; and
 - (b) the vehicle is being driven—
 - (c) in response, or for practice in responding, to a national security emergency by a person who has been trained in driving vehicles at high speeds; or
 - (d) for the purpose of training a person in driving vehicles at high speeds.


SCHEDULE 1 - 20mph Speed Limit (Reduction from 30mph)

Road	Length
Whitton Road, Stockton	For its full length
Hadasia Gardens, Stockton	For its full length
Fuchsia Grove	For its full length
Blue Bell Grove	For its full length
Premier Road	For its full length
Tanya Gardens	For its full length
Middleham Road	For its full length
Coverdale Road	For its full length
Autumn Grove	For its full length

Almond Grove	For its full length
Orchard Road	For its full length
The Chase	For its full length
Lime Grove	For its full length
Blackthorn Grove	For its full length
Meadow Road	For its full length
Berberis Grove	For its full length

Given under the Common seal of the Council of the Borough of Stockton-on-Tees on 13th of October 2023

THE COMMON SEAL of THE COUNCIL OF
THE BOROUGH OF STOCKTON-ON-TEES
was hereunto affixed in the presence of:



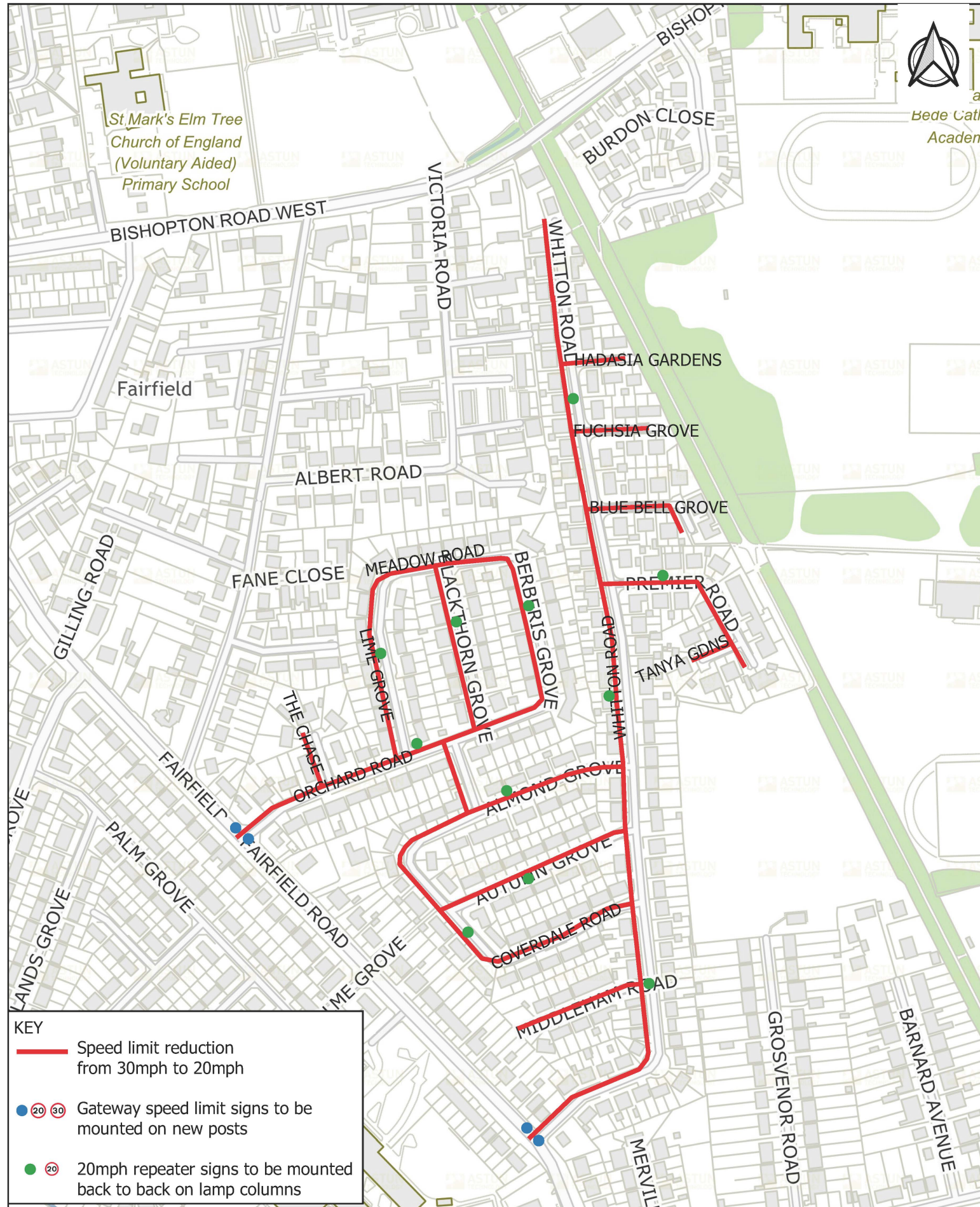
Authorised Officer of the Council



**THE BOROUGH OF STOCKTON-ON-TEES
WHITTON ROAD AREA, FAIRFIELD, STOCKTON
TRAFFIC REGULATION ORDER 2023**

STATEMENT OF REASONS

The Council made the above named Order for preserving or improving the amenities of the area through which the road runs.



KEY

- Speed limit reduction from 30mph to 20mph
- 20 30 Gateway speed limit signs to be mounted on new posts
- 20 20mph repeater signs to be mounted back to back on lamp columns



Stockton-on-Tees
BOROUGH COUNCIL

Community Services Environment & Culture
 Director: R Kench
 Stockton-on-Tees Borough Council
 Municipal Buildings, Church Road,
 Stockton-on-Tees TS18 1LD
 Telephone: (01642) 393939

Title
 Whitton Road area, Fairfield
 20mph speed limit