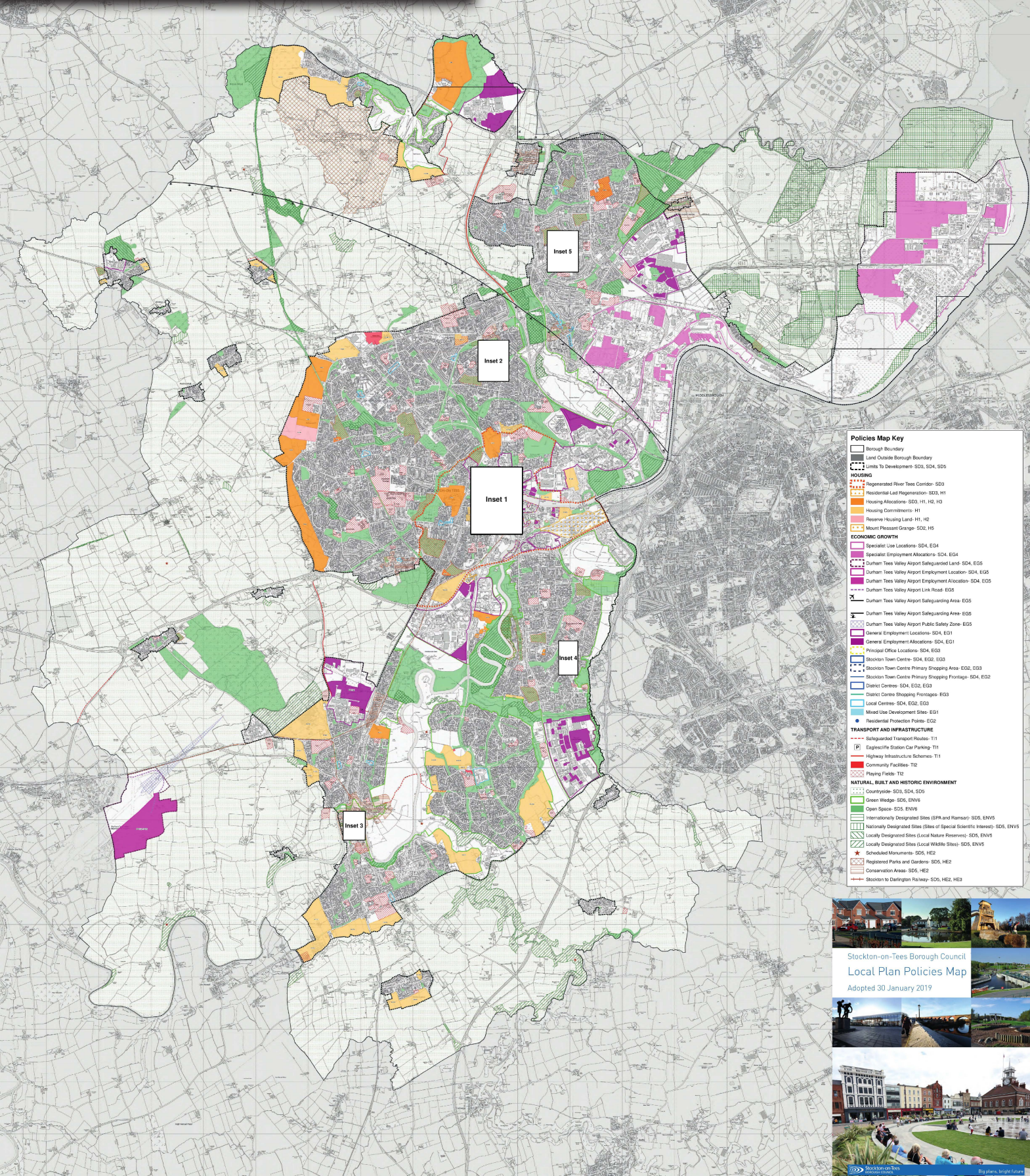


# Local Plan Policies Map

Adopted 30 January 2019



© Crown Copyright  
and database right 2018  
Ordnance Survey 100022997



Policies Map Key	
[Solid line]	Borough Boundary
[Dashed line]	Land Outside Borough Boundary
[Dotted line]	Limits To Development: SDS, SD4, SD5
HOUSING	
[Orange hatched]	Regenerated River Tees Condon- SD3
[Red hatched]	Residential Led Regeneration- SD3, H1
[Orange]	Housing Allocations- SD3, H1, H2, H3
[Light orange]	Housing Commitments- H1
[Green hatched]	Reserve Housing Land- H1, H2
[Yellow hatched]	Mount Pleasant Garage- SD3, H5
ECONOMIC GROWTH	
[Pink]	Specialist Use Locations- SD4, EG4
[Purple]	Specialist Employment Allocations- SD4, EG4
[Red dashed]	Durham Tees Valley Airport Safeguarded Land- SD4, EG5
[Purple dashed]	Durham Tees Valley Airport Employment Location- SD4, EG5
[Pink dashed]	Durham Tees Valley Airport Employment Allocation- SD4, EG5
[Red dashed]	Durham Tees Valley Airport Link Road- EG9
[Black dashed]	Durham Tees Valley Airport Safeguarding Area- EG5
[Black dashed]	Durham Tees Valley Airport Safeguarding Area- EG5
[Black dashed]	Durham Tees Valley Airport Public Safety Zone- EG5
[Blue hatched]	General Employment Locations- SD4, EG1
[Purple hatched]	General Employment Allocations- SD4, EG1
[Yellow hatched]	Principal Office Locations- SD4, EG3
[Blue hatched]	Stockton Town Centre- SD4, EG2, EG3
[Blue hatched]	Stockton Town Centre Primary Shopping Area- EG2, EG3
[Blue hatched]	Stockton Town Centre Primary Shopping Frontage- SD4, EG2
[Blue hatched]	District Centres- SD4, EG2, EG3
[Blue hatched]	District Centre Shopping Frontages- EG3
[Blue hatched]	Local Centres- SD4, EG2, EG3
[Blue hatched]	Mixed Use Development Sites- EG1
[Blue hatched]	Residential Protection Points- EG2
TRANSPORT AND INFRASTRUCTURE	
[Blue hatched]	Safeguarded Transport Routes- T1
[Blue hatched]	Expansive Station Car Parking- T1
[Blue hatched]	Highway Infrastructure Schemes- T1
[Blue hatched]	Community Facilities- T2
[Blue hatched]	Playing Fields- T2
NATURAL, BUILT AND HISTORIC ENVIRONMENT	
[Green hatched]	Countryside- SD5, SD6
[Green hatched]	Green Wedge- SD5, ENV6
[Green hatched]	Open Space- SD5, ENV6
[Green hatched]	Internationally Designated Sites (SPA and Ramsar)- SD5, ENV5
[Green hatched]	Nationally Designated Sites (Sites of Special Scientific Interest)- SD5, ENV5
[Green hatched]	Locally Designated Sites (Local Nature Reserves)- SD5, ENV5
[Green hatched]	Locally Designated Sites (Local Wildlife Sites)- SD5, ENV5
[Green hatched]	Scheduled Monuments- SD5, HE2
[Green hatched]	Registered Parks and Gardens- SD5, HE2
[Green hatched]	Conservation Areas- SD5, HE2
[Green hatched]	Stockton to Darlington Railway- SD5, HE2, HE3

Stockton-on-Tees Borough Council  
Local Plan Policies Map  
Adopted 30 January 2019

Stockton-on-Tees Borough Council  
Big plans. Bright future.