
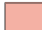
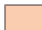
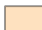

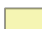
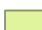





# Billingham South Ward

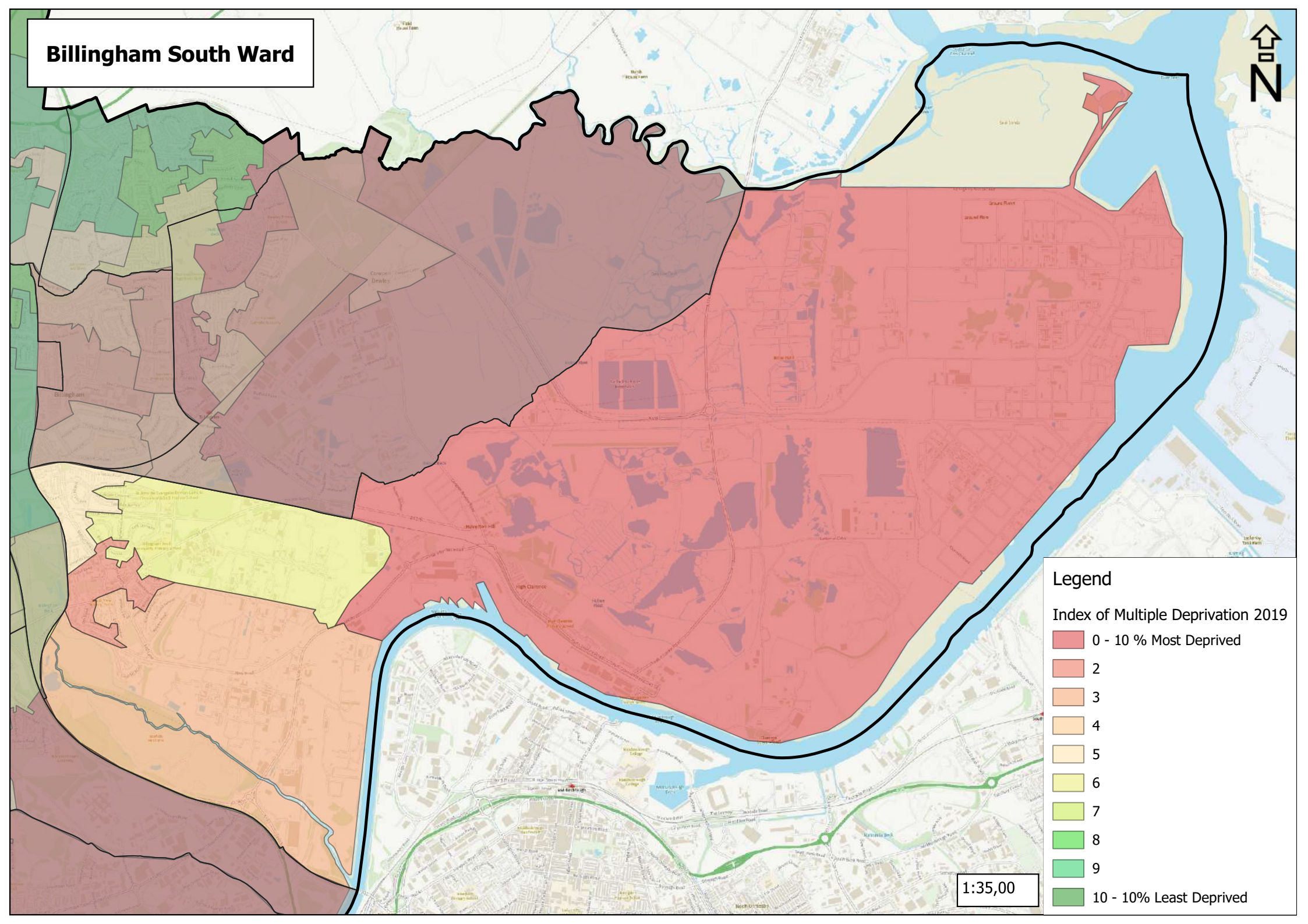


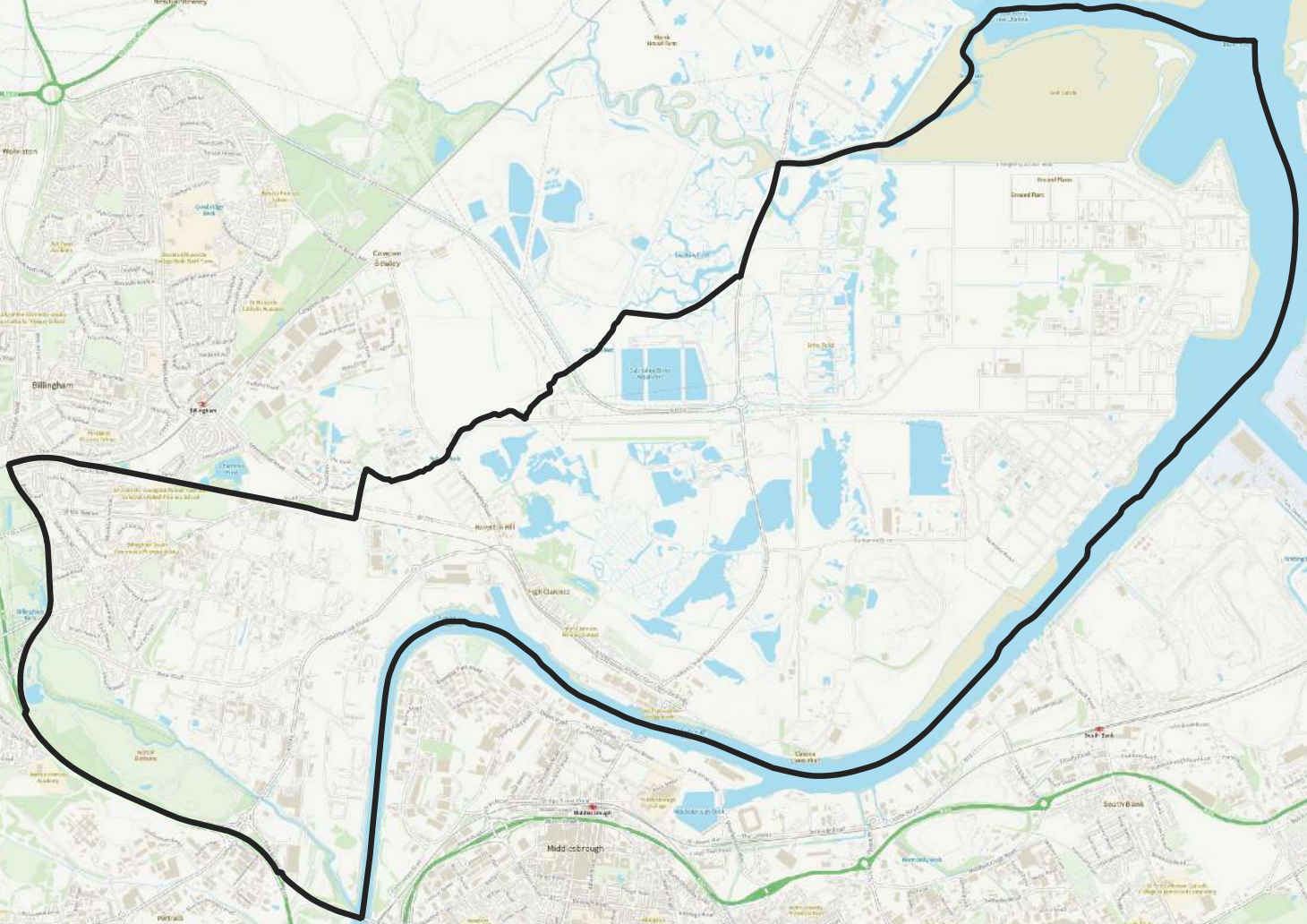
## Legend

Index of Multiple Deprivation 2019

-  0 - 10 % Most Deprived
-  2
-  3
-  4
-  5
-  6
-  7
-  8
-  9
-  10 - 10% Least Deprived

1:35,00





Legend

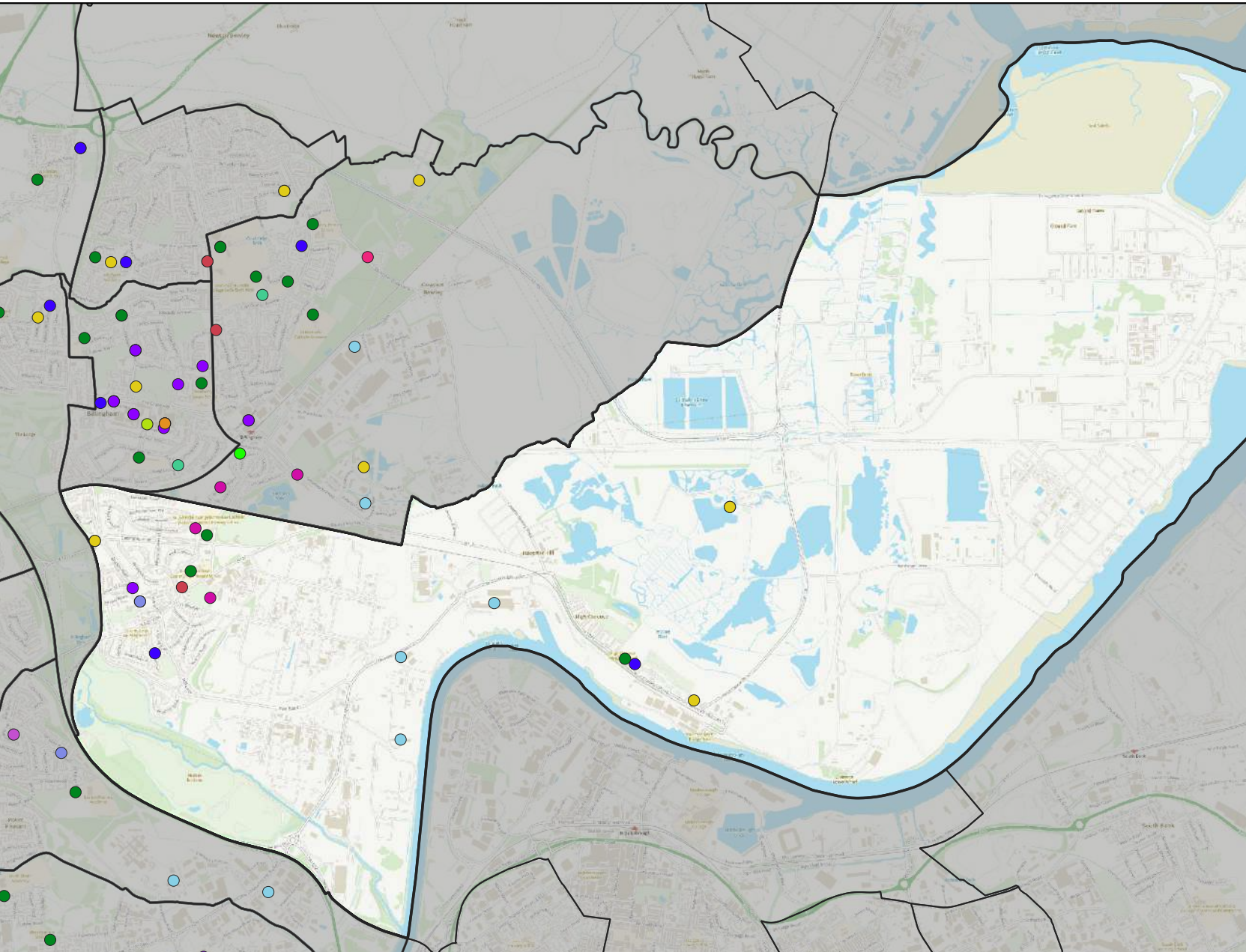
wards

1:50,00



### Legend

- Community Assets**
- Care Facilities
  - Care Homes
  - Cemeteries
  - Colleges
  - Community Centres
  - Family Hubs
  - Fire Stations
  - Industrial Estates
  - Leisure
  - Libraries
  - Medical
  - Museums, Theatres and Arts Venues
  - Parks and Green Spaces
  - Police Station
  - Residential Homes
  - Schools
  - Train Stations



Map Produced by the GIS Team  
Stockton-on-Tees Borough Council

Stockton-on-Tees Borough Council  
Municipal Buildings, Church Road,  
Stockton-on-Tees TS18 1LD  
Telephone: (01642) 393939

Title

Billingham South Ward